

Wireless Semi-Professional Weather Station

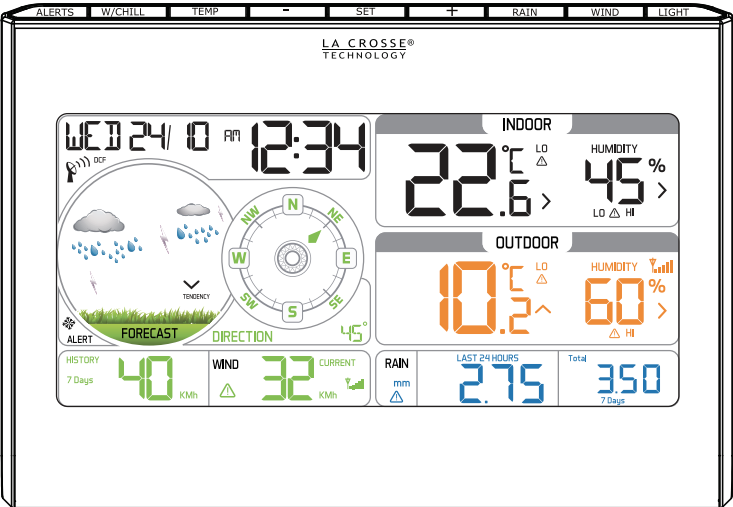
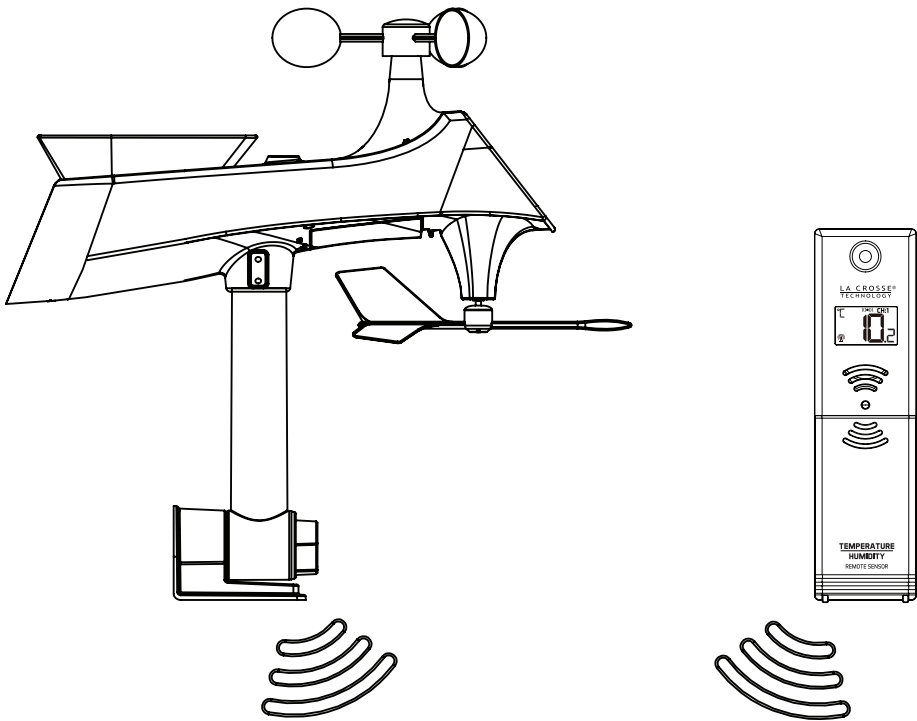


Table of Contents

Setup Preparation	2
Search for Temperature/Humidity Sensor	2
Search for Multi-sensor	2
Initial Setup and Assembly	3
Mounting Instructions	6
Mounting Continued	7
LCD Features	8
LCD Features Continued	9
Button Functions	10
Settings: Time, Date, Units	11
Wind Speed Readings	13
Reset Wind Speed History	14
Wind Direction Readings	14
Rainfall Readings	14
Reset Rainfall History	15
HIGH/LOW Temperature and Humidity Readings	15
Reset HIGH/LOW Temperature and Humidity Readings	16
Wind Chill, Heat Index, Dew Point Readings	17
Ice Alert	17
Set Weather Alerts	18
Temperature/Humidity Trend Arrows	21
Color Weather Forecast	21
Forecast Tendency Arrows	22
DCF Time Signal Search	22
Replace Windcups	23
Replace Directional Vane	23
Multi-sensor Solar Panel	24
Factory Reset/Clear Memory	24
Care and Maintenance	25
Specifications	26

Setup Preparation

Welcome!

Here are some items needed to setup your station (not included):

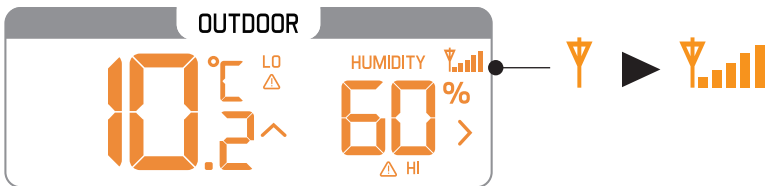
1. Screwdriver for assembly.
2. Fresh Batteries: 5 (five) AA LR6 alkaline or lithium batteries for the sensors.
3 (three) AAA LR3 alkaline batteries for the station (optional).

For best results:

- Remove weather station and sensors from the package and place together on a table or bench, within easy reach.
- Place batteries and screwdriver within reach of setup location.
- Keep sensors and weather station 2-3 meter apart for the first 15 minutes after installing batteries.
- Each sensor reads independently to the weather station. Before permanently mounting sensors, place them in desired location for 1 hour to be sure there is a steady reading to the weather station.
- Maximum transmission range is 100 m. (330 ft) open air.
- If sensor connection is lost, search for the sensors.

Search for Temperature/Humidity Sensor

- Hold the **TEMP** button for 2 seconds to search for the sensor.
- The tower icon will flash for 3 minutes while searching.



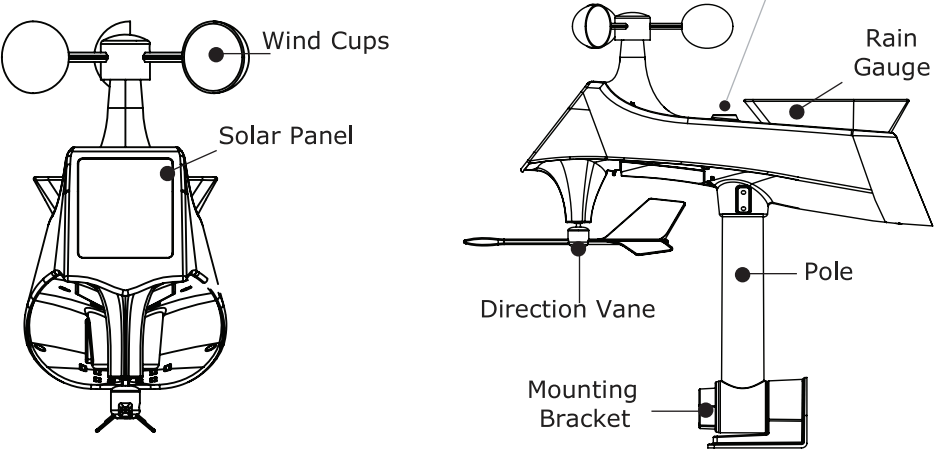
Search for Multi-sensor

- Hold the **WIND** button for two seconds.
- The tower icon will flash for 3 minutes while searching.

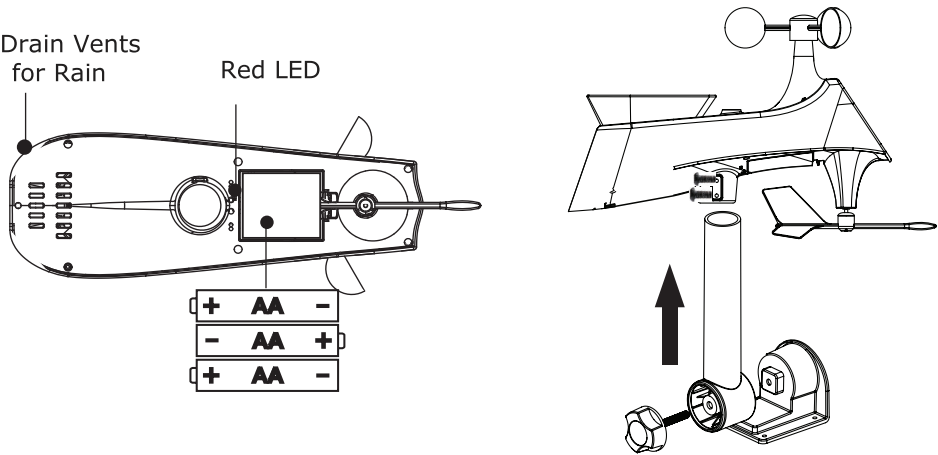


Initial Setup and Assembly

TX231RW Multi-Sensor
(Anemometer/Pluviometer)



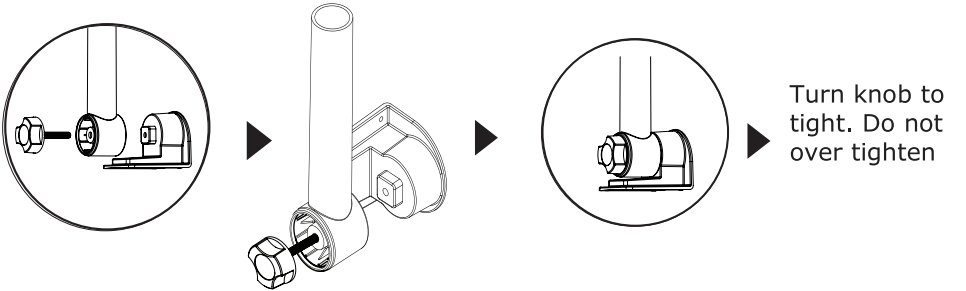
- 1. Install 3 AA LR6 batteries into the bottom of the Multi-sensor.
- 2. The red LED light on the bottom, will flash every 30 seconds when transmitting.



- 3. Insert pole into the bottom of sensor and secure with two screws.

Note: Your own mounting pole (1.2 inches, 3.1 cm, not included) may be inserted into the sensor, instead of using the mounting bracket and pole included.

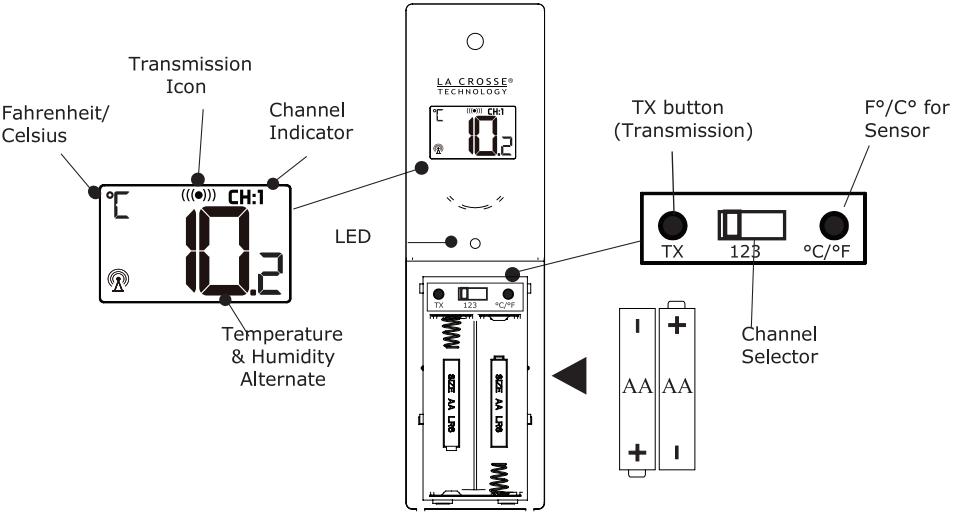
- The mounting bracket has a square connection to prevent the sensor from tipping.
- Turn the knob to tighten the bracket to the pole.



TX232TH Sensor

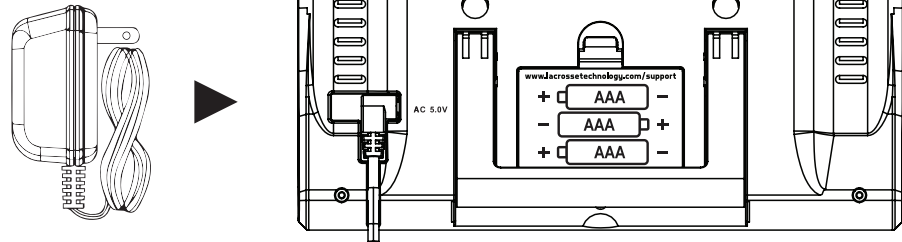
- Insert 2 AA LR6 batteries into the temperature/humidity sensor.
- The red LED light will flash every 58 seconds when transmitting.
- The transmission icon will show briefly when transmitting.
- You can select a different channel on the sensor if you suspect interference.

Note: Two hours after initial setup, the temperature/humidity sensor will search for the time signal.

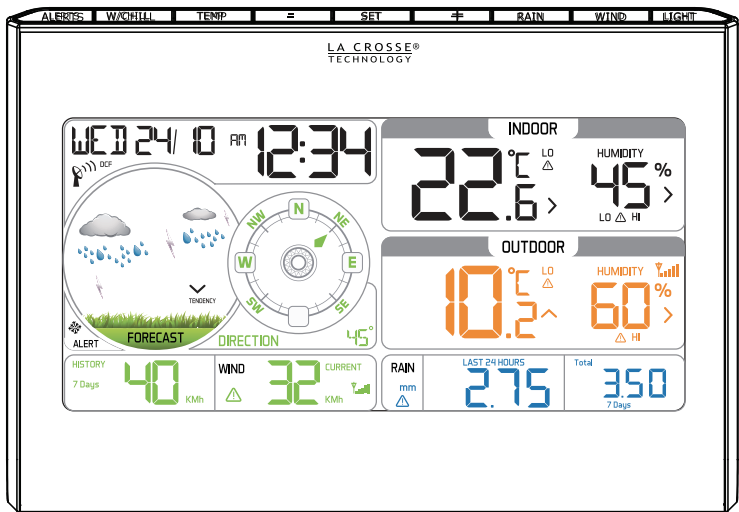


Note: At temperatures below -10°C (14°F) the sensor display will turn off to protect the LCD. Sensor will still transmit data.

Weather Station



- 1. Insert the 6.0 volt AC adapter into the back of the weather station.
- 2. Insert 3 AAA LR3 batteries into the weather station (optional).
- 3. Keep both sensors and the weather station together for 15 minutes to lock in the sensor signals.
- 4. (Optional)-Spin the wind cups to simulate wind speed. Take the Multi-sensor to the sink and slowly drip water into the rain bucket to simulate rain.
- 5. After 15 minutes, follow the mounting instructions for proper placement of each sensor.



Note: Your weather station should have readings in all sections. Wind and Rain will show 0's (connected) until wind or rain occur or are simulated.

Mounting Instructions

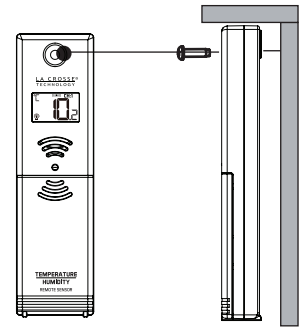
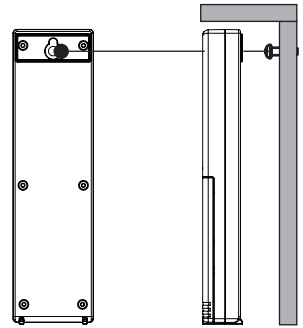
TX232TH-LCD Temperature/Humidity Sensor

Option 1:

- Install one mounting screw into a wall leaving some extended.
- Place the transmitter onto the screw, gently pull the transmitter down to lock the screw into place.

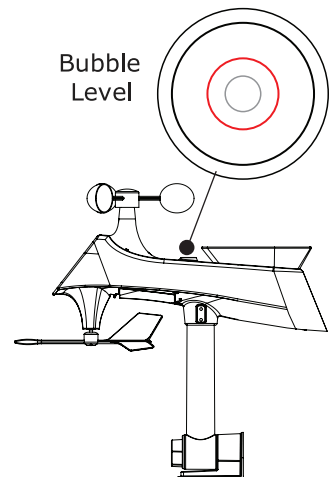
Option 2:

- Insert the mounting screw through the front of the transmitter and into the wall.
- Tighten the screw to snug (do not over tighten).
- Mount the temperature/humidity sensor on a north-facing wall or in any well shaded location. Sun will make it read high.
- Under an eave or deck rail is preferred.
- Be sure the outdoor sensor is mounted vertically to drain moisture.
- Avoid mounting under a metal roof and use stainless steel screws for best DCF reception and RF transmission.
- The maximum wireless transmission range to the weather station is over 100 meters (330 feet) in open air, not including walls or floors.



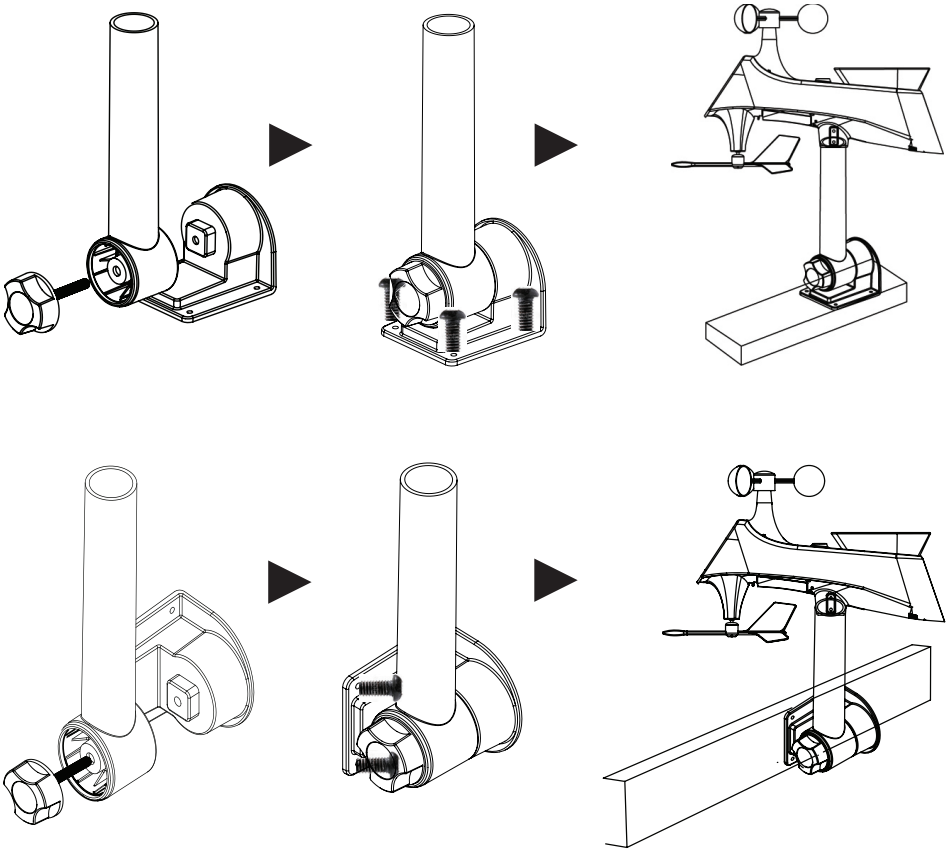
TX231RW Multi-sensor

- For most accurate wind speed and rainfall readings, mount the Multi-sensor in an open area clear for 15 meter in all directions.
- Mount with the solar panel facing south so the wind direction is correct. See N, S, E W, embossed on the top of the sensor.
- Use the bubble level on the top of the sensor to ensure it is level, for accurate rainfall readings.



Mounting continued

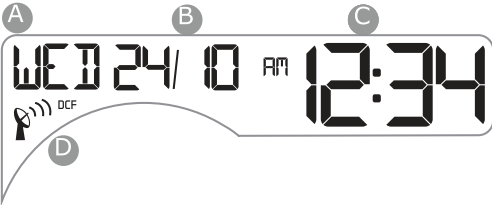
- The maximum wireless transmission range to the station is over 100 meters (330 feet) in open air, not including walls or trees.
- Mount sensor vertically.
- Cups should be on the top of the sensor.
- Attach to mounting surface with screws through the mounting bracket.
- The sensor can be mounted from the bottom or from the side.



Alternatively:

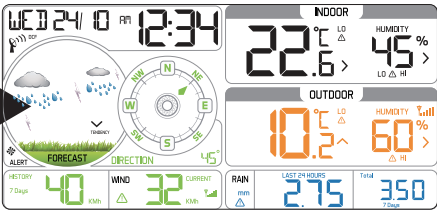
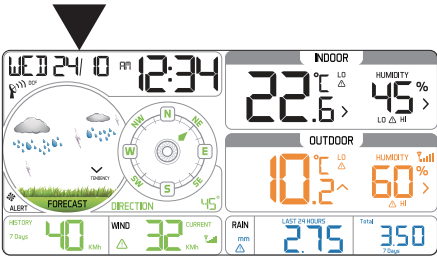
- Insert your own mounting pole sensor.
- Tighten screws
- Mounting bracket would not be used.

LCD Features



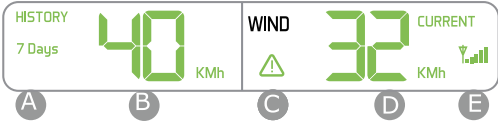
Time/Date

- A Weekday
- B Date/Month
- C Hours/Minutes
- D Time Signal Icon



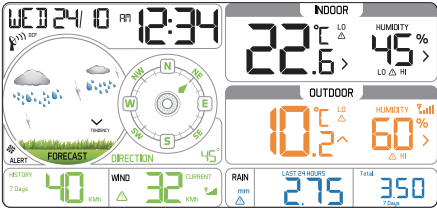
Forecast, Wind Direction

- A Colored Forecast
- B Forecast Tendency Arrow
- C Wind Direction Compass Rose
- D Ice Alert Icon
- E Wind Direction Degrees/Letters

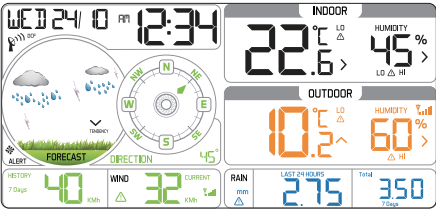


Wind Speed/History

- A Wind History (1 Hour Default)
- B Top Speed (Last 60 minutes)
- C Wind Speed Alert Icon
- D Current Speed (30 Second Average)
- E Multi-sensor Reception

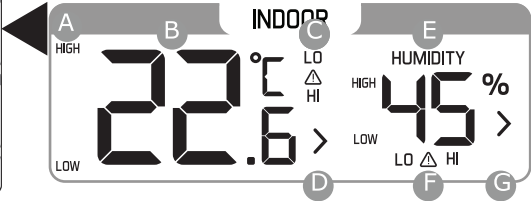


LCD Features continued

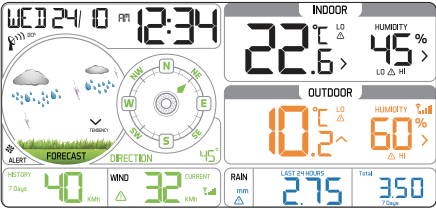


Indoor Temperature/Humidity

- A HIGH/LOW Temp. Records
- B Indoor Temperature
- C Temperature Alert Icons
- D Temperature Trend Arrow

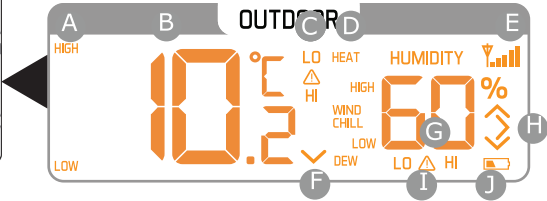


- E Indoor Humidity
- F Humidity Alert Icons
- G Humidity Trend Arrow

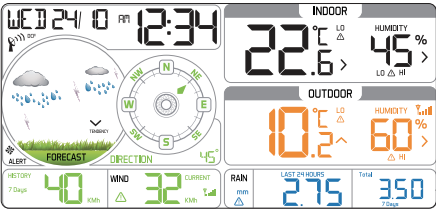


Outdoor Temperature/Humidity

- A HIGH/LOW Temperature Records
- B Outdoor Temperature
- C Temperature Alert Icons
- D Heat Index/Wind Chill/Dew Point
- E Temperature Reception Icon



- F Temperature Trend Arrow
- G Outdoor Humidity
- H Humidity Trend Arrow
- I Humidity Alert Icons
- J Low Battery Icon-TH Sensor



Rainfall

- A Rainfall Alert Icon (24 Hours)
- B 24 Hour Running Rainfall Total



- C Rainfall History Records (1 hour default)

Button Functions



ALERTS

Normal Alerts:

- Hold 2 seconds to enter alert setting mode

Alerts Mode:

- Press to confirm and move to next item

W/CHILL

Normal Alerts:

- Press once to view Wind Chill
- Press twice to view Heat Index
- Press 3 times to view Dew Point

TEMP

Normal Alerts:

- Hold 2 seconds to search for TH sensor
- Press and release to view HIGH/LOW temperature and humidity with time stamp

MINUS (-)

Setting Mode and Alert Mode:

- Press to decrease value by one
- Hold to decrease quickly

Wind, Rain, Temp Mode:

- Hold 5 seconds to reset select readings to current

Alert Mode:

- Press to arm/disarm alerts

SET

Setting Mode and Alert Mode:

- Press to decrease value by one
- Hold to decrease quickly

Wind, Rain, Temp Mode:

- Hold 5 seconds to reset readings to current

PLUS (+)

Setting Mode and Alert Mode:

- Press to increase value by one
- Hold to increase quickly

Alerts Mode:

- Press to arm/disarm alerts

RAIN

Normal Mode:

- Press and release to show 1hr, Day, 7days, Month, Year or Total rainfall.
- The reading will display and stay on the record selected

WIND

Normal Mode:

- Press to show 1 hour, 24 hour, 7 days, month and year of max wind speed
- If user doesn't press this button, the unit will return to normal display 1 hour, after 30 seconds
- Hold for 2 seconds to search for the Multi-sensor

LIGHT

Normal Mode:

- Press to change the LCD backlight brightness: HI/LOW/OFF
- Press this button to open back light for 10 seconds. (without adapter)


Wind, Rain, Temp, Alerts Mode:

- Press to exit any setting mode

Settings: Time, Date, Units

- Hold the **SET** button two seconds to enter time set mode.
- Press the + or - buttons to adjust the values.
- Hold the + or - buttons to adjust quickly.
- Press the **SET** button to confirm adjustments and move to the next item.
- Press the **LIGHT** button at any time to exit.

Setting order:

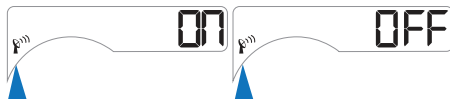
1. BEEP ON/OFF
2. DCF ON/OFF (Time Signal) 
3. Time Zone +/-12h
4. 12/24 hr format
5. Hour and Minutes
6. Year, Month and Date
7. Calendar format Month/Day or Day/Month
8. Fahrenheit or Celsius
9. Rainfall Inches or Millimeters
10. Wind Direction in degrees or cardinal direction
11. Wind Speed MPH or KMH

Note: Press the **LIGHT** button at any time to exit or wait 30 seconds without pressing a button.

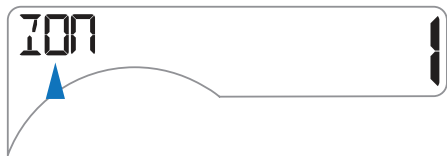
1. Beep ON (default) or OFF



2. DCF ON (default) or OFF



3. Select Time Zone (Default 1)



4. 12Hr/24Hr



5. Set Hours and Minutes



6. Set Year and Month



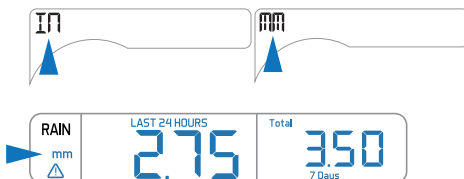
7. Set Date and Date Format



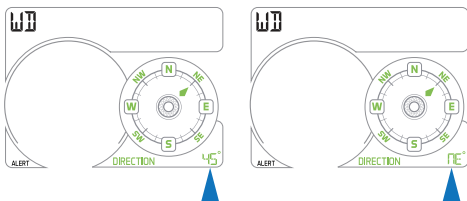
8. Fahrenheit or Celsius



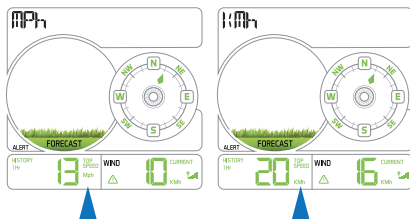
9. Rainfall IN or MM



10. Direction: degrees or letters

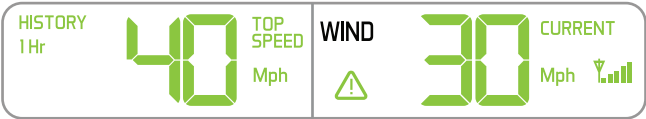


11. Wind speed KMH or MPH



Wind Speed Readings-Updates Every 30 seconds

Current Speed: 30 second average of the wind speed.



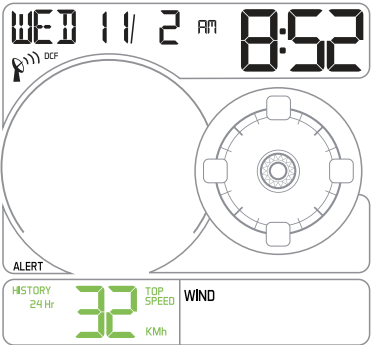
Top Speed: Highest instantaneous reading in the past 60 minutes. Updates, when a higher wind speed has occurred.

Wind History:

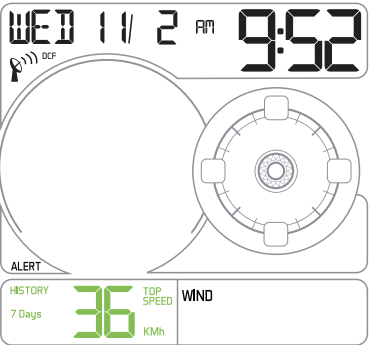
Press and release the **WIND** button to view the maximum wind history values.

- One Hour: past 60 minute period (default record)
- 24-hour: Past 24 hour period, from last record
- 7 Days: Past 7-day period, from last record
- Month: Defined by Calendar Month i.e. January 1 - January 31
- Year: Defined by Calendar Year i.e. January 1 - December 31

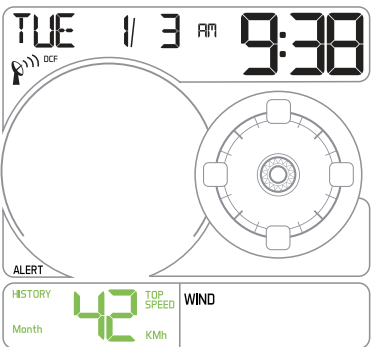
24 Hour



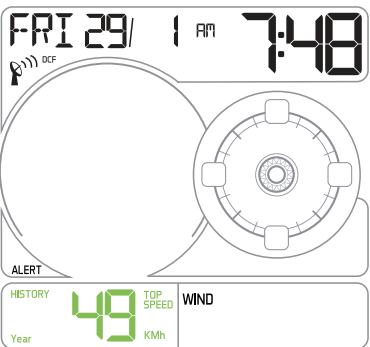
7 Days



Month



Year



Reset Wind Speed History:

- While viewing individual values, hold the **MINUS** button for five seconds to reset the value.
- Wind Speed, time and date stamp will reset to current.

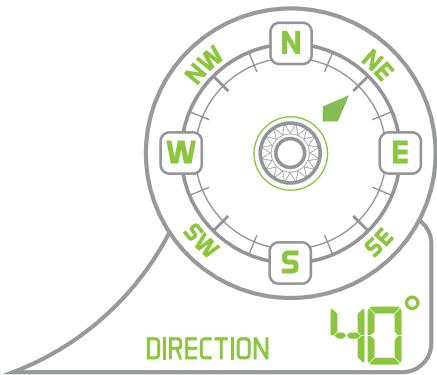
Wind Direction Readings

Compass Rose:

- The Compass Rose displays the cardinal directions in usable format.
- The large diamond on the rose indicates the wind direction.

Degrees or Letters:

- Below the rose the wind direction is displayed in degrees.
- In the settings section, you can choose the direction to display in letters. EX: 40° would read as NE.



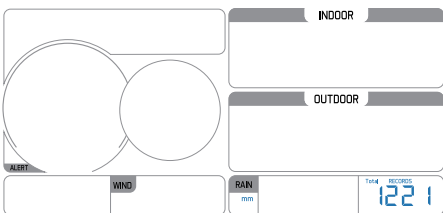
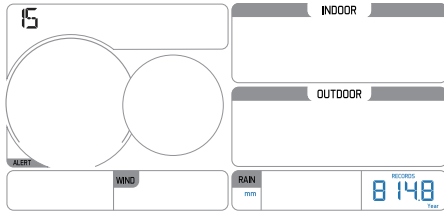
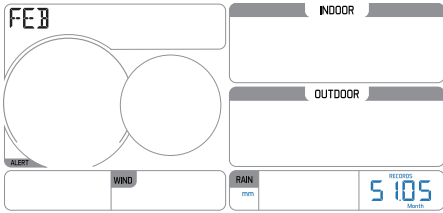
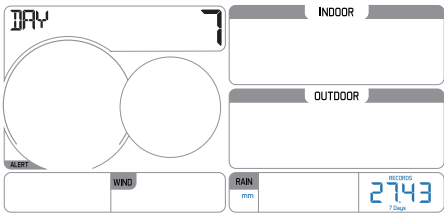
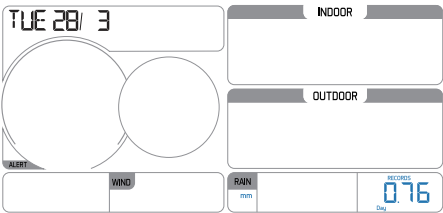
Rainfall Readings

Last 24 Hours: Total rain that occurred from now, back 24 hours.
24 hour rainfall is constantly displayed.



Press and release the **RAIN** button to view rain history:

- One Hour: past 60 minute periods (default record)
- Day: 24 hr period from 00H00 – 23H59
- 7 Days: Past 7-day period, from last record
- Month: Defined by Calendar Month i.e. January 1 - January 31
- Year: Defined by Calendar Year i.e. January 1 - December 31
- Total: running total since station was powered up.



Reset Rainfall History:

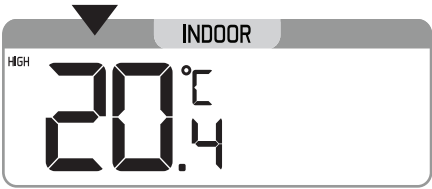
- While viewing individual values, hold the **MINUS** button for five seconds to reset the value.
- Rainfall, time and date stamp will reset to current.

High/Low Temperature/Humidity Readings

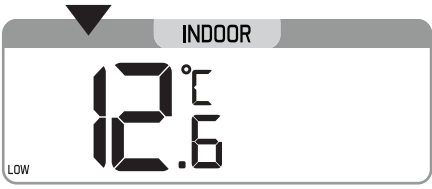
View: Press and release the TEMP button to view indoor and outdoor temperature/humidity values with time and date.

- Indoor temperature HIGH
- Indoor temperature LOW
- Indoor humidity HIGH
- Indoor humidity LOW
- Outdoor temperature HIGH
- Outdoor temperature LOW
- Outdoor humidity HIGH
- Outdoor humidity LOW

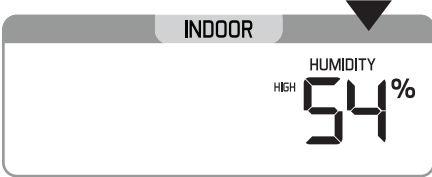
Indoor Temperature HIGH



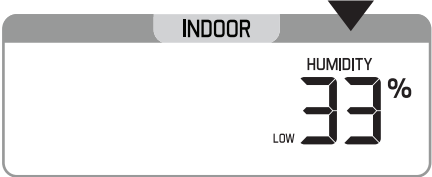
Indoor Temperature LOW



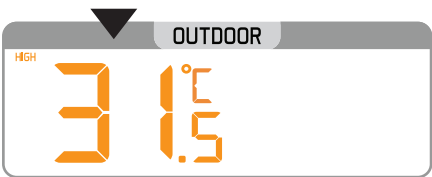
Indoor Humidity HIGH



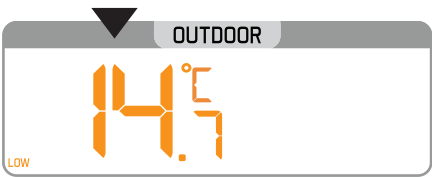
Indoor Humidity LOW



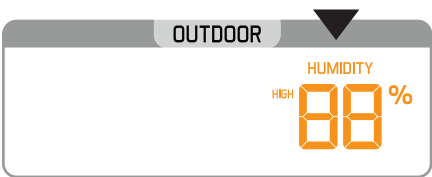
Outdoor Temperature HIGH



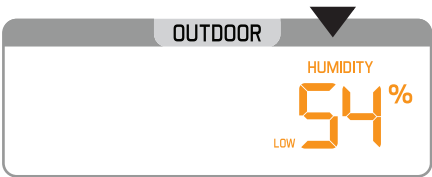
Outdoor Temperature LOW



Outdoor Humidity HIGH



Outdoor Humidity LOW



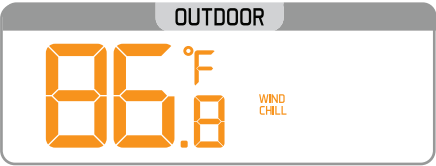
Reset High/LOW Temperature/Humidity Records:

- While viewing individual values, hold the **MINUS** button for five seconds to reset the value.
- Temperature, humidity, time and date stamp will reset to current.

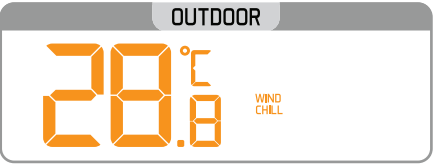
Wind Chill-Heat Index-Dew Point Readings

- Press **W/CHILL** button once to view Wind Chill
- Press twice to view Heat Index
- Press 3 times to view Dew Point

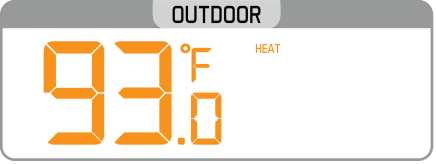
Wind Chill °F



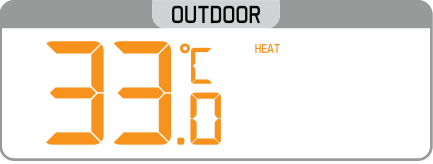
Wind Chill °C



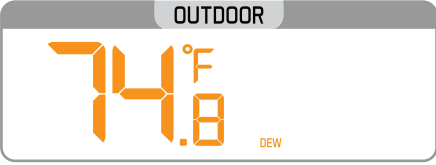
Heat Index °F



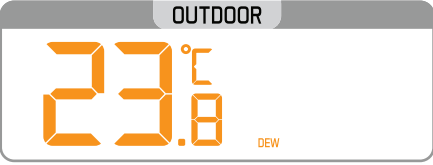
Heat Index °C



Dew Point °F



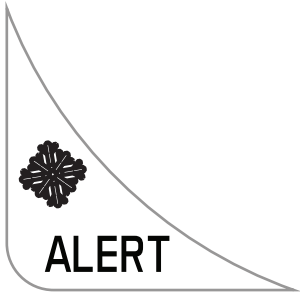
Dew Point °C



Ice Alert

Ice Alert Range:

- -3 °C to 2 °C (26.6 °F to 35.6 °F)
- When the outdoor temperature reaches the ice alert range, the ice alert icon will flash (no sound)
- When the temperature is above 2 °C (35.6 °F) or below -3 °C (26.6 °F), the alert icon will not appear.



Set Weather Alerts

Important:

- The alerts menu is in the order listed below.
- Leave an alert OFF (disarmed) to skip setting that alert value.
- The alert icon will show when the alert is active.
- When armed alert value is reached, station will beep until a button is pressed. The flashing alert icon will indicate if it is a LOW or HI alert.
- Press any button to stop the temp alert sound. The alert icon will flash while value is in alert range.

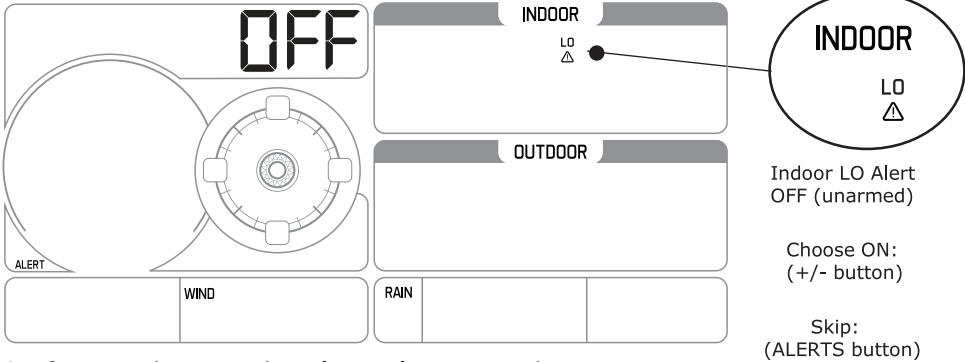


Alert Setting Order:

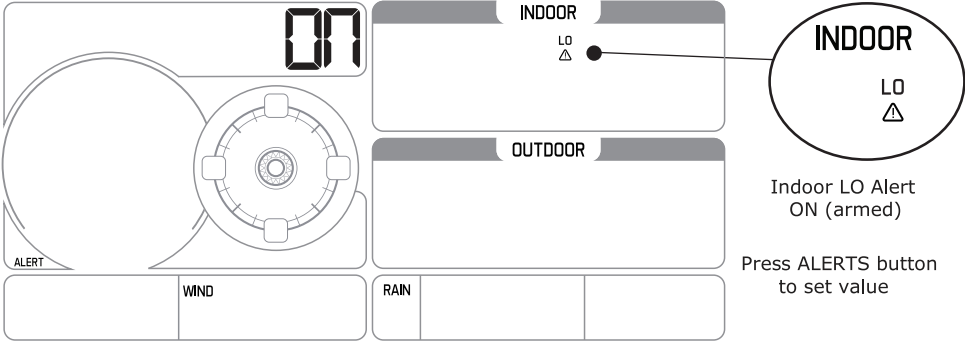
- Indoor LOW Temperature ON/OFF
- Indoor LOW Temperature Value -9.9°C-50°C (14.18°F-122°F)
- Indoor HIGH Temperature ON/OFF
- Indoor HIGH Temperature Value -9.9°C-50°C (14.18°F-122°F)
- Indoor LOW Humidity ON/OFF
- Indoor LOW Humidity Value 10%RH-99%RH
- Indoor HIGH Humidity ON/OFF
- Indoor HIGH Humidity Value 10%RH-99%RH
- Outdoor LOW Temperature ON/OFF
- Outdoor LOW Temperature Value -40°C-60°C (-40°F-140°F)
- Outdoor HIGH Temperature ON/OFF
- Outdoor HIGH Temperature Value -40°C-60°C (-40°F-140°F)
- Outdoor LOW Humidity ON/OFF
- Outdoor LOW Humidity Value 10%RH-99%RH
- Outdoor HIGH Humidity ON/OFF
- Outdoor HIGH Humidity Value 10%RH-99%RH
- 24-hour Rainfall ON/OFF
- 24-hour Rainfall Value 0-99.9mm (0-3.93 inches)
- Top Wind Speed ON/OFF
- Top Wind Speed Value 0-180kmh (0-111mph)

To set alerts:

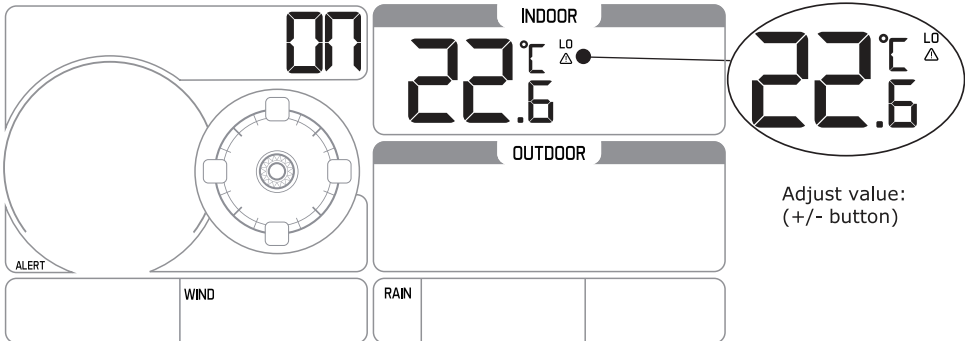
1. Hold the **ALERTS** button to enter alert set mode
2. Indoor LOW temperature alert OFF will show.



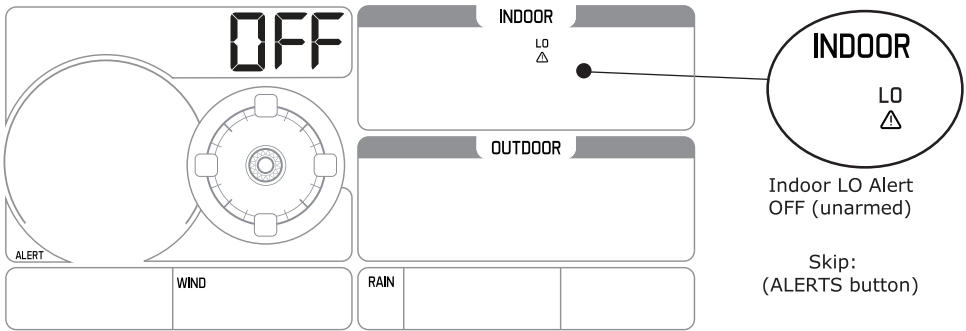
3. If you wish to set this alert value, press the + or - buttons to arm this alert (ON).



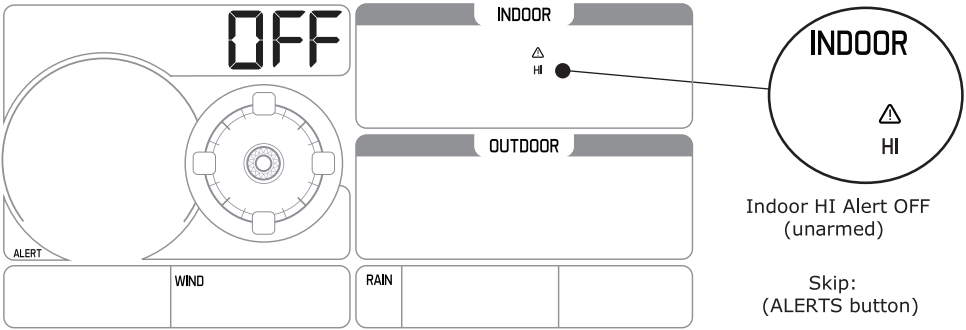
4. When the alert is armed (ON) press the **ALERTS** button to set the alert value.
5. The Indoor LOW temperature alert value will flash.
6. Press the + or - buttons to change the alert value.
7. Press the **ALERTS** button to confirm and move to the next alert.
8. Press the **LIGHT** button to exit.



9. If you do not wish to set an alert, press the **ALERTS** button again to move to the next alert.



10. Press and release the **ALERTS** button until you get to the alert you wish to set.

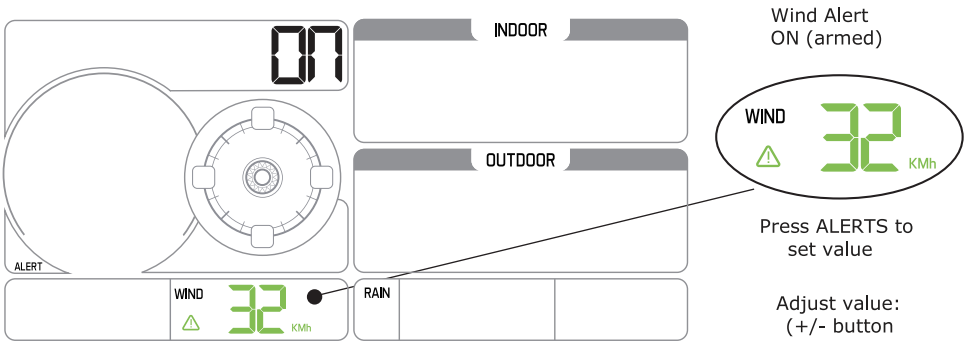


11. To set the alert, first press the + or - buttons to turn the alert ON.

12. When the alert is armed (ON), press the **ALERTS** button to set the alert value. The alert value will flash.




13. Press the + or - buttons to change the alert value.

14. Press the **ALERTS** button to confirm and move to the next alert. Or press the **LIGHT** button to exit.



Temperature/Humidity Trend Arrows

The temperature (2°F/1°C) and humidity (3%) trend indicators update every 30 minutes. The trend reflects changes over the past 3 hours. E.G.: At 15H00 — compares to 12H00 data; at 15H30 — compares to 12H30.

Temperature or Humidity increased in past 3 hours 	Temperature or Humidity did not change in past 3 hours 	Temperature or Humidity decreased in past 3 hours 
--	---	--

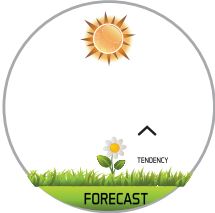
Colored Weather Forecast

Intelligent Weather Forecast:

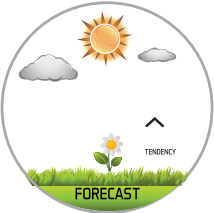
This station learns. Please allow 30 days for barometric calibration. This will ensure an accurate personal forecast for your location.

Six color forecast icons use changing atmospheric pressure to predict weather conditions for the next 12-hours with 70-75% accuracy.

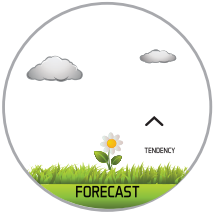
Sunny



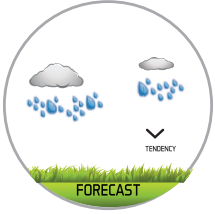
Partly Sunny



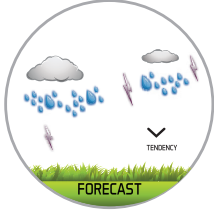
Cloudy



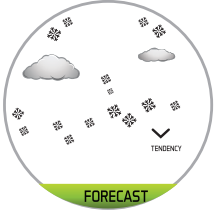
Rainy



Stormy



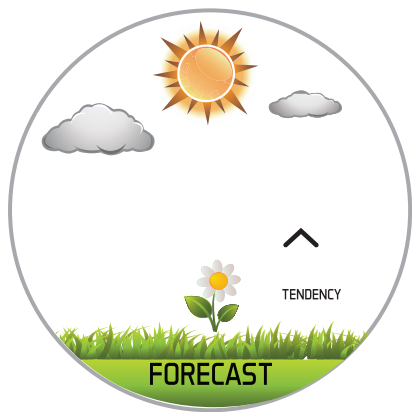
Snowy






Note: Snowy icon will appear in place of rainy and stormy icons when the outdoor temperature is below 0°C.

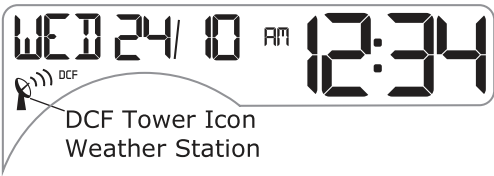
Forecast Tendency Arrows

The forecast trend indicators update every 30 minutes. The trend reflects changes in pressure (1 hPa) over the past 3 hours.
E.G.: At 15H00 — compares to 12H00 data; at 15H30 — compares to 12H30.



	Pressure is rising, weather expected to improve
	Pressure is unchanged
	Pressure is falling, weather expected to worsen

DCF Time Signal

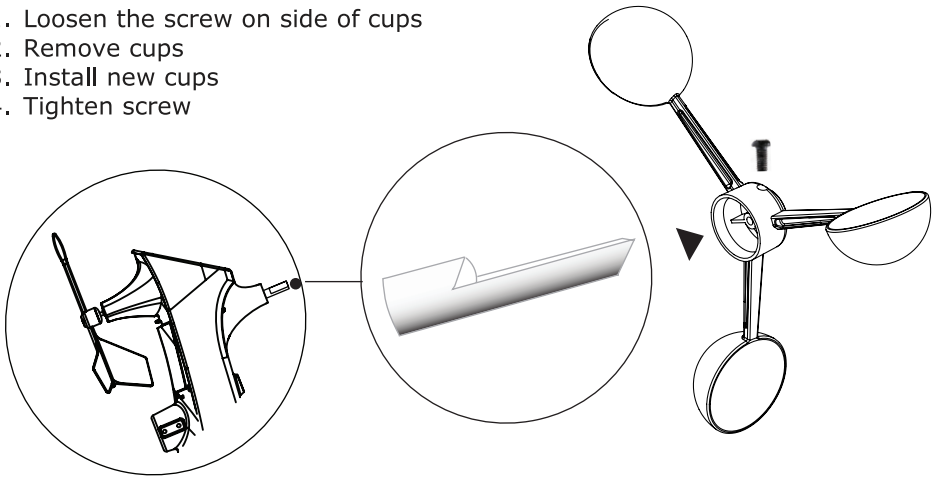


- The Temperature/Humidity Sensor receives the Time Signal (DCF) from Mainflingen, Germany.
- The sensor will search for DCF signal up to 5 minutes, then return to transmitting temp/humidity. The first search is 2 hours after startup.
- The atomic time search initiates every six hours until successful reception. Each following night.
- The tower icon shows when sensor have received the signal.

Note: To ensure good signal reception, we invite you to place the base away from the AC adapter by extending the wire of the adapter, as this can slow down the signal reception.

Replace Wind Cups

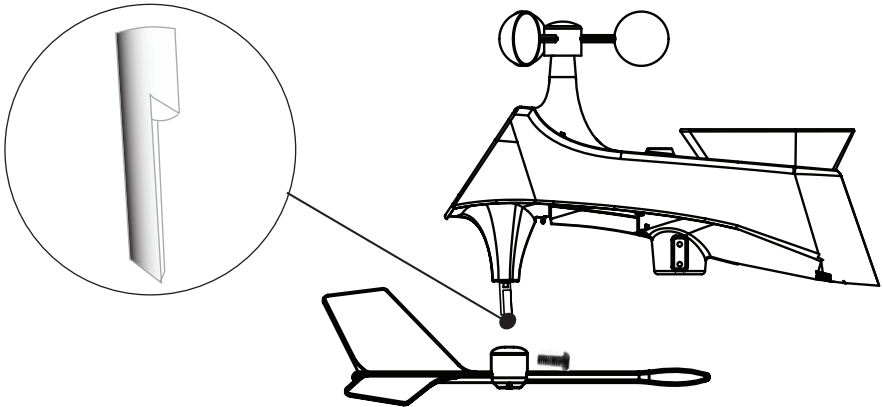
1. Loosen the screw on side of cups
2. Remove cups
3. Install new cups
4. Tighten screw



Note: The screw in the wind cups will fit on the flat side of the metal stem on the sensor.

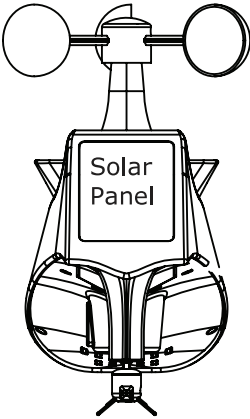
Replace Directional Vane

1. Loosen the screw on side of vane
2. Remove direction vane
3. Install new vane
4. Tighten screw



Note: The directional vane attached to the stem on the sensor. The screw will tighten to the flat side of the stem for a secure fit.

Multi-sensor Solar Panel



- The solar panel will operate the sensor with sufficient sunlight.
- Batteries are required to operate the sensor at night or days without sufficient sunlight.
- The solar panel extends the battery life.

Factory Reset/Clear Memory



The factory reset will return the weather station to its default settings. This will clear all previous recorded history, so you may want to write down data before taking this step.

1. Hold the **LIGHT** and **ALERTS** buttons together for 5 seconds to reset the weather station, clear all records, and return all settings to default.
2. The weather station will fully populate, then return to a normal display and search for outdoor sensors.
3. While searching for the outdoor sensors the Wind Speed, Outdoor Temperature/Humidity and Rainfall totals will show dashes.
4. Once connected to the outdoor sensors (allow 3 minutes) the Wind Speed, Outdoor Temperature/Humidity, and Rainfall will show current readings.

Note: In the absence of wind or rain, these readings will show 0, indicating sensor connection.

Care and Maintenance

- Do not mix old and new batteries
- Do not mix Alkaline, Standard, Lithium or Rechargeable Batteries
- Always purchase the correct size and grade of battery most suitable for the intended use.
- Replace all batteries of a set at the same time.
- Clean the battery contacts and also those of the device prior to battery installation.
- Ensure the batteries are installed correctly with regard to polarity (+ and -).
- Remove batteries from equipment which is not to be used for an extended period of time.
- Remove expired batteries promptly.
- Improper use or unauthorized opening of housing voids warranty.
- If the product is not working properly, change the batteries and/or check the AC adapter connection.

Specifications:

Indoor:

- Temperature Range: -9.9°C to 50°C (14.18°F to 122°F)
- Humidity Range: 10% to 99% RH
- Update interval: About every 30 seconds

TH Sensor:

- Temperature Range: -40°C to 60°C (-40°F to 140°F)
- Humidity Range: 10% to 99% RH
- Update interval: About every 58 seconds
- Transmission Range: 100 m (330 ft) RF 868MHz open air

Multi-sensor:

- Wind Speed Range: 0-180 kmh (0-111.8 mph)
- Wind Direction: 0-359 degrees
- Rainfall: 0-9999 mm (0-393.7 inches)
- Update interval: About every 30 seconds
- Transmission Range: 100 m (330 ft) RF 868MHz open air

Power:

- Weather Station: 6.0 Volt 100mA adapter included (Primary)
- Adapter Number: HX0180600100D2E
- Optional Battery: 3-AAA, IEC, LR3 batteries (not included)
- TX231RW Multi-sensor: 3-AA, IEC, LR6 batteries (not included)
- TX232TH-LCD TH Sensor: 2-AA, IEC, LR6 batteries (not included)

Battery Life:

- Weather Station: 60 to 48 months when using adapter.
- Multi-sensor/TH sensor: over 24 month with reputable batteries

Dimensions:

- WS6868 Weather Station: 193.04 W x 133.10 H x 22.86 D mm
(7.60" W x 5.24" H x 0.90" D in)
- TX231RW Multi-sensor: 345.95 x 330.20 x 131.06 mm
(13.62" W x 13" H x 5.16" D in)
- TX232TH-LCD TH sensor: 42.42 W x 155.96 H x 21.02 D mm
(1.67" W x 6.14" H x 0.83" D)

LIABILITY DISCLAIMER

- The electrical and electronic wastes contain hazardous substances. Disposal of electronic waste in wild country and/or in unauthorized grounds strongly damages the environment.
- Please contact your local or/and regional authorities to retrieve the addresses of legal dumping grounds with selective collection.
- All electronic instruments must from now on be recycled. User shall take an active part in the reuse, recycling and recovery of the electrical and electronic waste.
- The unrestricted disposal of electronic waste may do harm on public health and the quality of environment.
- As stated on the gift box and labeled on the product, reading the "User manual" is highly recommended for the benefit of the user. This product must however not be thrown in general rubbish collection points.
- The manufacturer and supplier cannot accept any responsibility for any incorrect readings and any consequences that occur should an inaccurate reading take place.
- This product is designed for use in the home only as indication of the temperature.
- This product is not to be used for medical purposes or for public information.
- The specifications of this product may change without prior notice.
- This product is not a toy. Keep out of the reach of children.
- No part of this manual may be reproduced without written authorization of the manufacturer.
- The plug of the AC adapter (if included) is intended to be used as a disconnect device, the outlet must be installed near the equipment and must be easily accessible.

CAUTION:

Risk of fire or explosion or defeat the safeguard of equipment if the battery is replaced by an incorrect type. Replace only with the same or equivalent type. Disposal of a battery into fire or a hot oven, or mechanically crushing or cutting of a battery, that can result in an explosion.

High or low extreme temperatures or low air pressure at high altitude that the battery can be subjected to during use, storage or transportation.

Leaving the battery in an extremely high temperature and/or low high air pressure surrounding environment that can result in an explosion or the leakage of flammable liquid or gas.

ABOUT THE AC/DC SECTOR ADAPTER

Do not use the device:

- if the power supply or the power cable is damaged,
- in the event of a malfunction,
- if the device has been damaged in any way.

Never use sharp objects to access the inside of the power supply. Do not disassemble the power supply, do not throw it into a fire. Do not attempt to disassemble or modify this product or any of its components. Do not expose the food to high temperatures or direct sunlight. Do not incinerate it. Do not install the power supply near any heat source, such as a radiator, hot air supply, oven, or other apparatus (including amplifiers) that produce heat. Do not store this product in a place where the temperature exceeds the following range: - 10 to 70 ° C. Do not use this product in a location where the temperature exceeds the following range: 0 to 40 ° C, as this may damage it or shorten its life. Do not place the power supply near water or a source of moisture, such as a bathtub, sink, kitchen sink, swimming pool, in a wet basement or other damp location. The device must not be exposed to splashes. Do not place objects filled with water, such as vases for example, near the appliance. Connect the power supply to an easily accessible AC outlet. Ensure that the power cord cannot be crushed or pinched, particularly at plugs, convenience receptacles, and the point where they are connected to the apparatus. The supplied power supply is intended for indoor use only. Do not place naked flame sources (such as a lighted candle) on or near the power supply. Unplug this power supply during lightning storms or during long periods of non-use to avoid damage. Turn off your device before disconnecting the power cable. This device is not intended to be used by people (including children) whose physical, sensory or mental capacities are reduced, or people without experience or knowledge, unless they could benefit, by the " through a person responsible for their safety, supervision or prior instructions concerning the use of the device. Children should be supervised to make sure that they do not play with the device. If the power supply works abnormally, and especially if it emits sounds or odors that you think are abnormal, unplug it immediately and have it examined by a qualified repairer.

The socket-outlet must be installed near the equipment and must be easily accessible.



RED Directive 2014/53/EU

Summary of the Declaration of Conformity : We hereby declare that this wireless transmission device does comply with the essential requirements of RED Directive

LA CROSSE TECHNOLOGY
6 A RUE DU COMMERCE
67118 GEISPOLSHIM
FRANCE